

## DB 6642

FLAMEPROOF MULTI WAY DISTRIBUTION BOX.

### Description

Explosion proof junction boxes with flanged covers. Available in six sizes, these boxes provide a wide range of terminations and distribution facilities. Integrally cast plates are provided for different combinations and cable entries on any of the four sides. Weatherproof protection is provided by high quality neoprene 'O' ring gaskets.

### Mechanical Data

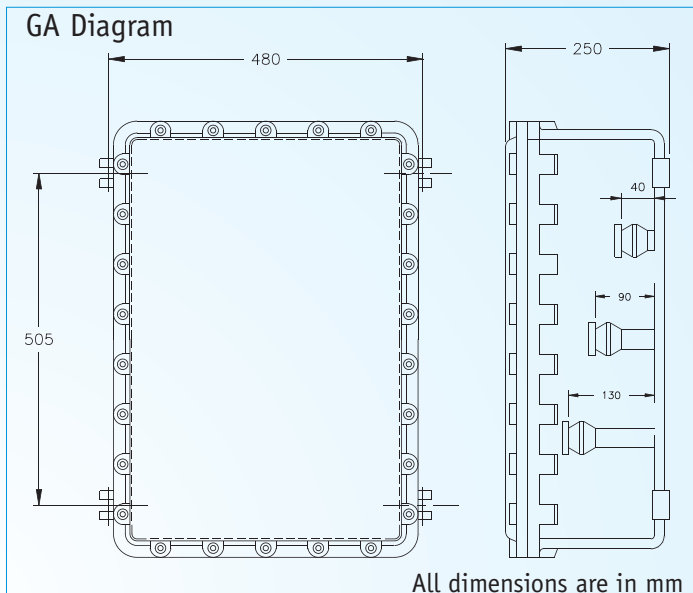
- Material : Aluminium LM6
- Weight : 48 Kg.
- IP Protection : IP 65 as per IS:13947(part 1)-1993/(IEC 60529/1989)
- Finish : Anti corrosive Epoxy powder coated
- Cable Entry : Refer Chart.
- Canopy : Optional
- Cover Fixing : Spigotted
- Hinge : Stainless Steel (Optional)
- Gasket : Neoprene
- Hardware : Stainless Steel

### Electrical Data

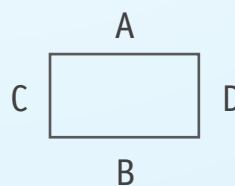
- Terminals : Refer terminal selection chart
- Earthing : External : 2 Nos - M6  
Internal : 1 No - M5

### Cable Entry Chart

Entry size (Inches)			DB 6642	
BSC	NPT / BSP	Metric (mm)	A / B	C / D
0.50	0.25	M 16 X 1.5	64	44
0.75	0.50	M 20 X 1.5	56	36
1.0	0.75	M 25 X 1.5	33	21
1.25	1.0	M 32 X 1.5	18	12
1.50	1.25	M 40 X 1.5	16	10
2.0	1.50	M 48 X 1.5	13	8
2.5	2.0	M 63 X 1.5	6	4

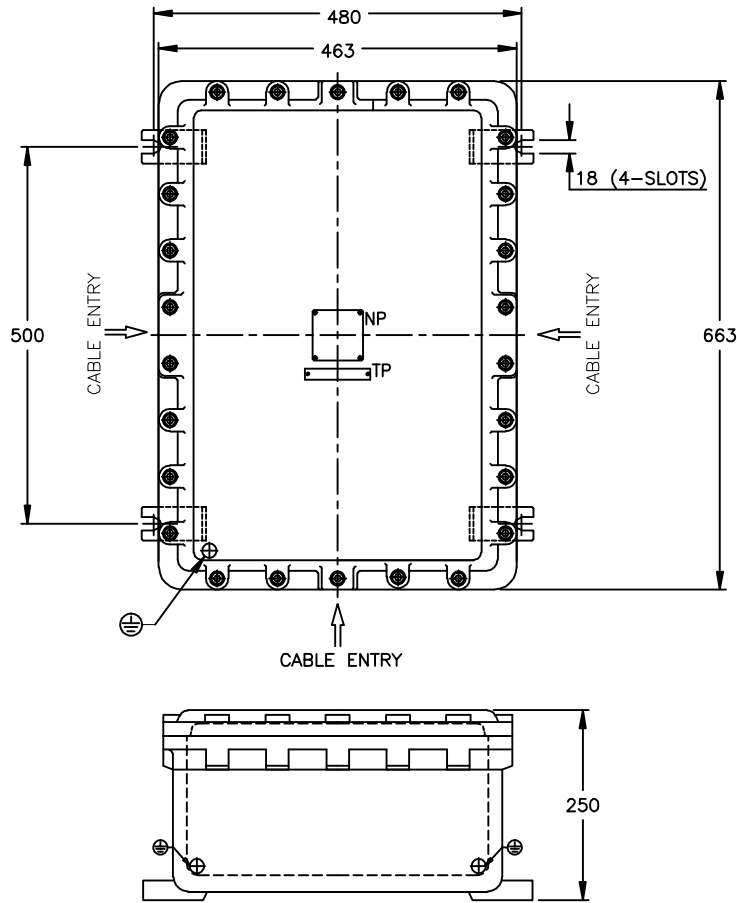


Type of protection	Flame Proof - Exd
Area Classification	Zone 1 & 2
Gas Groups	Group I, II A ,II B
Apparatus Standard	IS:2148:2004(IEC 60079-1/2001)
CMRI Certificate No.	CMRS / TC / H126
Approvals	CCE,BIS



IF IN DOUBT ASK

DO NOT SCALE



**NOTES :-**

- TL - 2.5sq.mm TERMINALS (ELMEX MAKE)
- NP -NAME & WARNING PLATE(SS)
- TP -TAG PLATE (SS)
- EARTHING -2Nos. EXTERNAL (M6) & 1No. INTERNAL (M5)
- HARDWARE -SS304

INTERNAL DIMENSION : 600x400x200mm  
 ALL DIMENSIONS ARE IN MM.

	CUSTOMER :	TITLE : EXPLOSIONPROOF MULTIWAY JUNCTION BOX					
	CONSULTANT :	CAT No : DB-6642					
	PROJECT :	CLASSIFICATION : Exd IIA, IIB IP65 ZONE 1&2					
	P.O No. :	WT: 60 kgs. (APPROX.)	MATL.: AL. LM6	ITEM No.: 01	QTY.: -		
	FINISH :	TOLERANCE : ±5mm SCALE N.T.S		FOR INFORMATION ONLY			
CMRI APPLIED	IS :13346/04 (IEC:60079-0/00)	NAME	DATE				
	IS :2148/04 (IEC:60079-1/01)	REV-1					
	IS :12063/87 (IEC:60529/89)	REV-2		SHEET 1 OF 1			
	<b>Baliga Lighting Equipments Private Limited,</b> KOVILAMBAKKAM, CHENNAI-600117, INDIA.		DRN.	S.S	08.05.09	DRG. No. QEDB664201	REV 0
			CHKD.				
			APPD.				