



The Flow Experts



## BALIGA FLOW NOZZLE

Flow nozzles are generally used for high pressure and high temperature lines for feed water and steam services in boiler applications.

Line size: Upto 900 NB (36)

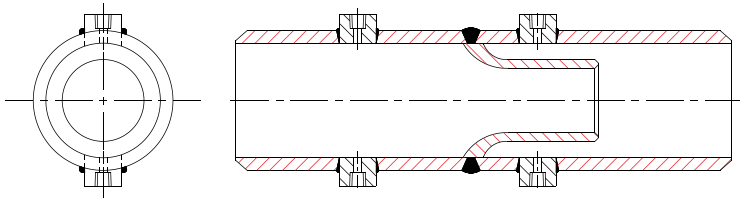
The following types of Nozzles are available

- Flanged Flow Nozzle
- Weld - in Type Flow Nozzle
- Holding Ring Type Flow Nozzle

Both ASME long radius and ISA 1932 designs are available.

Bore sizing is done as per ISO 5167 standard.

Materials of construction : SS316 / SS304/ Alloy Steel



## SPECIAL FEATURES

- Flow capacity is approximately 60% greater than an orifice plate with the same beta ratio.
- Sustains accuracy over longer periods of time than an orifice plate due to better wear qualities.
- Less subject to damming effect of solids or foreign matter in flow.
- Can be used in piping systems where flange connections are not desired.
- More accuracy in high velocity flows than orifice plate.

## BALIGA VENTURI TUBE

Venturi tubes are used for low pressure and low pressure loss services (for all fluids).

Line Sizes: Upto 1200 NB (48)

Sizing is done as per ISO 5167 standard.

Available types:

- > Machined venturi
- > Fabricated venturi
- > Classical venturi

Material of construction: Carbon steel, Stainless Steel.

