

EPFL Series



FLAME PROOF FLUORESCENT LUMINAIRE



EPFL 120



EPFL 220



EPFL 140



EPFL 240

Mechanical Data

- Material : Aluminium LM6
- IP Protection : IP 65 as per IS-12063/1987 / IEC 60529/1989
- Finish : Anti corrosive Epoxy powder coated
- Cable Entry : 1 X (0.75 " ET / 0.5" NPT / BSP / M20)
- Glass : Borosilicate Tube
- Wireguard : 5 mm Welded Steel Construction
- Reflector : Epoxy coated Aluminium Sheet
- Suspension : 2 Nos. Type 'B' Ceiling bracket
- Gasket : Neoprene
- Hardware : Stainless Steel (SS-304)

Electrical Data

- Ballast W : High efficiency energy saving electronic ballast
- Lamp Holder : Special Design - Bipin
- Wiring : PVC Insulated 1.5 sq.mm Stranded copper
- Max. Cable size : 3C X 4 sq.mm
- Int. Terminations : 4 sq.mm crimping lugs
- Insulators : DMC moulded bush plate
- Earthing : External 2 Nos - M6
Internal 1 No - M5
- Starter : Not Applicable
- Condenser : Not Applicable

Description

Explosion proof fluorescent luminaire with sealed clear glass tubing. Provided with specially designed spring loaded bi-pin holders for shock absorption and effective holding of the lamp. The control gear chamber mounted by means of socket screws is at one end and a lamp replacement cover is provided at the other end. Neoprene 'O' ring gaskets provide a high degree of weather proof protection.

To View the GA Drawing click on the Catalogue No.

[EPFL 120](#)

[EPFL 140](#)

[EPFL 220](#)

[EPFL 240](#)

Type of protection	Flame Proof - Exd
Area Classification	Zone 1 & 2
Gas Groups	Group I, II A ,II B
Apparatus Standard	IS-2148:2004(IEC 60079-1/2001), IS-2206 Part II
Approvals	CCE,BIS

S.No.	Catalog No.	Input Voltage (V)	Lamp rating (W)	Appr. Weight (kg)	CIMFR No.	Temp. Class
1	EPFL-120	110 / 250 V ac	1 * 20	4.5	CIMFR/TC/SR/381	T6
2	EPFL-220		2 * 20	9.5		
3	EPFL-140		1 * 40	9.6		
4	EPFL-240		2 * 40	20		



1

2

3

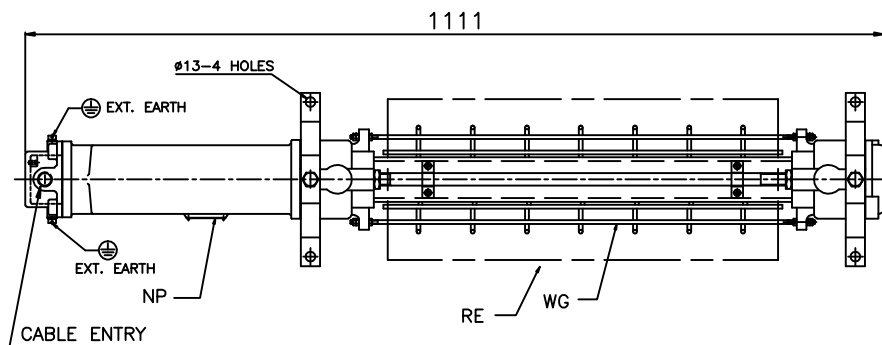
4

IF IN DOUBT ASK

DO NOT SCALE

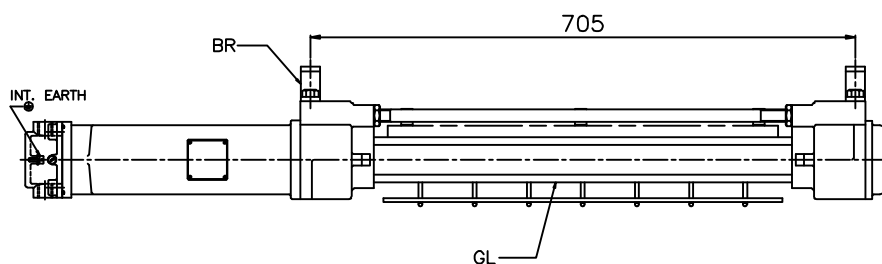
A

A



B

B



C

C

NOTES:

GL - GLASS (BOROSILICATE CLEAR TUBE GLASS)

LAMP TO SUIT - 1x20W FLUORESCENT LAMP

LAMP HOLDER - SPRING LOADED BI-PIN

RE - EXTERNAL REFLECTOR (ALUMINIUM EPOXY PAINTED)

WG - WIRE GUARD (M.S, EPOXY POWDER COATED - WHITE COLOUR)

BR - TYPE 'B' STRAP SUSPENSION

NP - NAME & WARNING PLATE (SS)

EARTHING - 2Nos. EXTERNAL & 1No. INTERNAL

ELECTRONIC CHOKE / COPPER CHOKE TO BE USED

HARDWARE - SS304

D

D

ALL DIMENSIONS ARE IN MM.

E

E

CABLE ENTRY:

1No.0.5"ET

CUSTOMER :

-

TITLE : EXPLOSIONPROOF
FLUORESCENT LIGHT FITTING

CONSULTANT :

-

CAT NO : EPFL-120

PROJECT :

-

CLASSIFICATION:
Exd IIB IP65 ZONE 1&2 T6

P.O No.:

-

WT.:8.0KGS, MATL.: AL ITEM No: QTY:
(APPROX.) LM-6 - -FINISH : EPOXY POWDER COATED
LIGHT GREY(SHADE-631 OF IS-5)TOLERANCE :±5mm
SCALE N.T.SFOR
INFORMATION
ONLY

F

F

CMRI : V/1/1/287 DT:18.06.82

IS:13346/04 (IEC:60079-0/00)

NAME DATE

CCE : R1(1)136/BALIGA/12-XVIII DT:24.12.2004

IS:2148/04 (IEC:60079-1/01)

REV-1

BIS : CM/L-0364341

IS:12063/87 (IEC:60529/89)

REV-2

SHEET 1 OF 1

**Baliga Lighting Equipments Limited**

KOVILAMBAKKAM, CHENNAI-600 117, INDIA.

DRN. S.S 18.03.09

CHKD.

APPD.

DRG. NO.

GAEPFL1201

REV

0

1

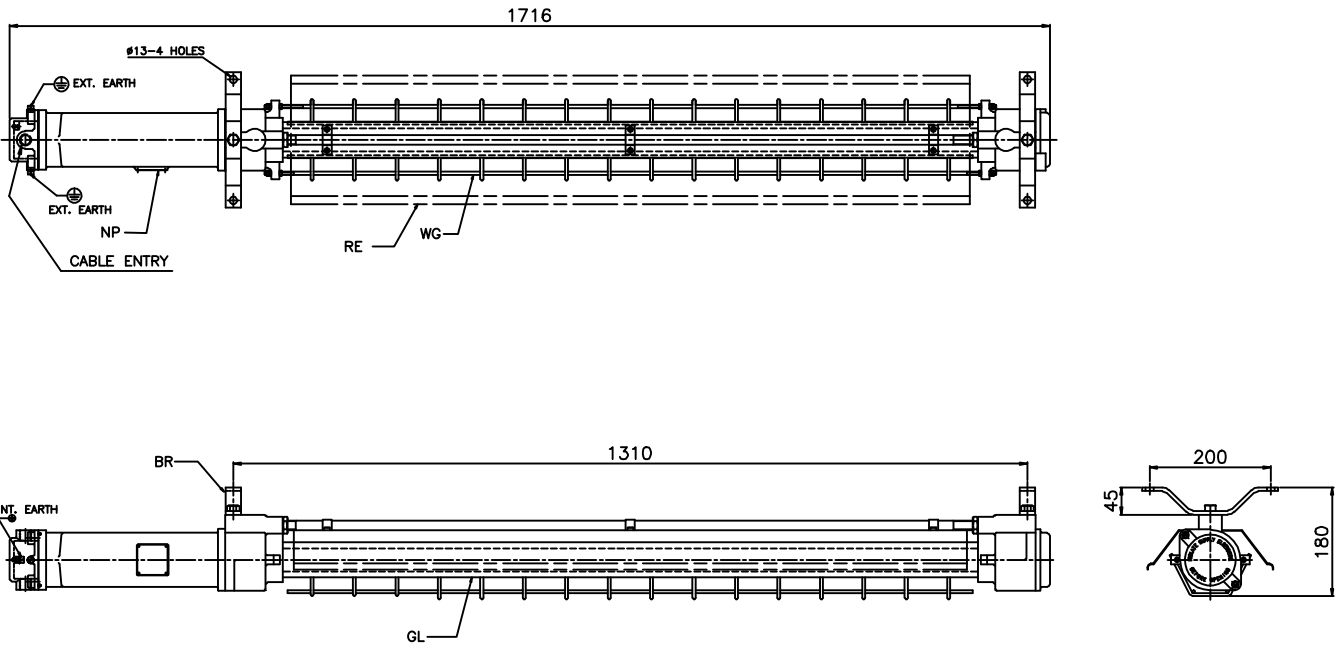
2

3

4

IF IN DOUBT ASK

DO NOT SCALE



NOTES:

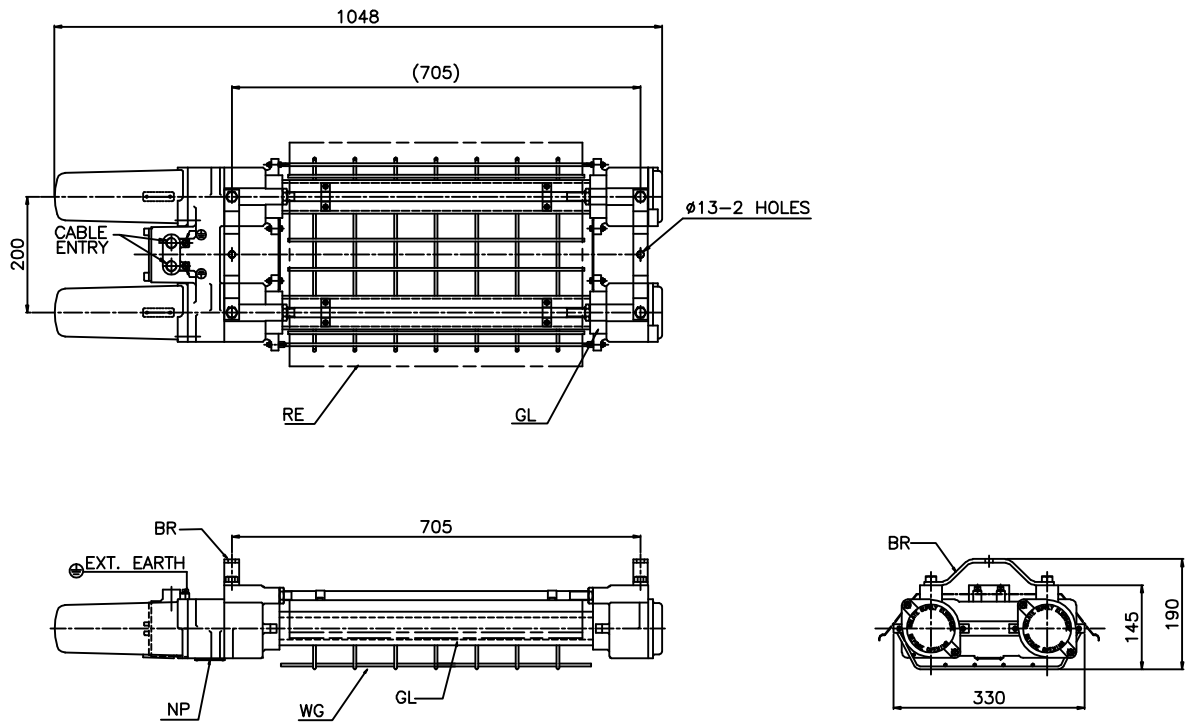
- GL -GLASS (BOROSILICATE CLEAR TUBE GLASS)
- LAMP TO SUIT -FLUORESCENT TUBE LIGHT 1x40W
- LAMP HOLDER -SPRING LOADED BI-PIN
- RE -EXTERNAL REFLECTOR (ALUMINIUM-EPOXY COATED)
- WG -WIRE GUARD (M.S, EPOXY POWDER COATED - WHITE COLOUR)
- BR -TYPE 'B' STRAP SUSPENSION
- NP -NAME & WARNING PLATE (SS)
- EARTHING -2Nos. EXTERNAL & 1No. INTERNAL
- ELECTRONIC CHOKE / COPPER CHOKE TO BE USED
- HARDWARE - SS304

ALL DIMENSIONS ARE IN MM.

E	CABLE ENTRY: 1No. 0.75 ET	CUSTOMER :	-	TITLE :	EXPLOSIONPROOF FLUORESCENT LIGHT FITTING				
		CONSULTANT :	-	CAT NO :	EPFL-140				
		PROJECT :	-	CLASSIFICATION:	Exd IIB IP65 ZONE 1&2 T6				
		P.O No.:	-	WT.:8.0KGS. (APPROX.)	MATL.: LM-6	ITEM No:	-	QTY:	-
		FINISH : EPOXY POWDER COATED LIGHT GREY(SHADE-631 OF IS-5)		TOLERANCE :±5mm		FOR INFORMATION ONLY			
		SCALE N.T.S							
F	CMRI :	CMRI/V/1/1945 DT: 15.09.1982	IS:13346/04 (IEC:60079-0/00)	NAME	DATE	SHEET 1 OF 1			
	CCE :	R1(1)136/BALIGA/12-XVIII, DT:24.12.2004	IS:2148/04 (IEC:60079-1/01)	REV-1					
	BIS. :	CM/L-0364341	IS:12063/87 (IEC:60529/89)	REV-2					
	Baliga Lighting Equipments Limited		DRN.	S.S	18.03.09			DRG. NO.	REV
KOVILAMBAKKAM, CHENNAI-600 117, INDIA.		CHKD.			GAEPL1401	0			
		APPD.							

IF IN DOUBT ASK

DO NOT SCALE



NOTES:

- GL -GLASS (BOROSILICATE CLEAR TUBE GLASS)
- LAMP TO SUIT -FLUORESCENT TUBE LIGHT 2x20W
- LAMP HOLDER -SPRING LOADED BI-PIN
- RE -EXTERNAL REFLECTOR (ALUMINIUM-EPOXY COATED)
- WG -WIRE GUARD (M.S, EPOXY POWDER COATED - WHITE COLOUR)
- BR -TYPE 'B' STRAP SUSPENSION
- NP -NAME & WARNING PLATE (SS)
- EARTHING -2Nos. EXTERNAL & 1No. INTERNAL
- ELECTRONIC CHOKE / COPPER CHOKE TO BE USED
- HARDWARES - SS304

ALL DIMENSIONS ARE IN MM.

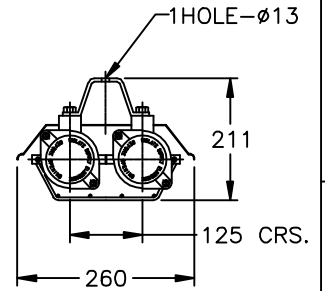
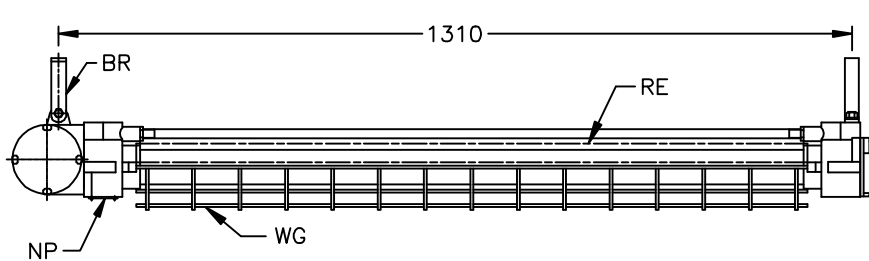
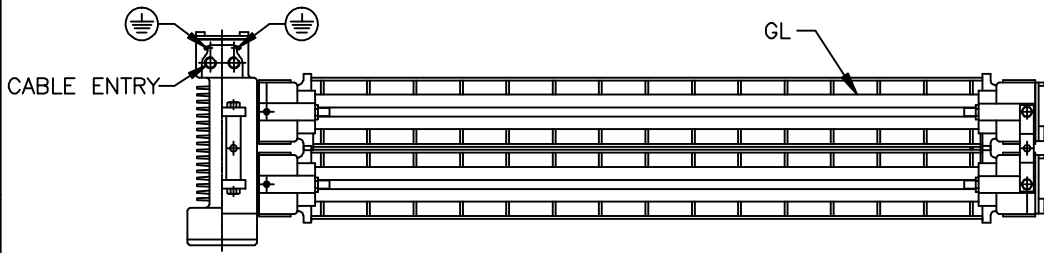
<p><u>CABLE ENTRY:</u> 2Nos. 0.75 ET</p>	CUSTOMER :		TITLE : EXPLOSIONPROOF TWIN FLUORESCENT LIGHT FITTING		
	CONSULTANT :		CAT No. : EPFL-220		
	PROJECT :		CLASSIFICATION : Exd IIB IP65 ZONE 1&2 T6		
	P.O No. :		WT.:20KGS, MATL.: (APPROX.) LM-6	ITEM No.:	QTY.:
	FINISH : EPOXY POWDER COATED LIGHT GREY(SHADE-631 OF IS:5)		TOLERANCE :±5mm SCALE N.T.S		FOR INFORMATION ONLY
CMRI : V/1/1/287 DT:18.06.92	IS:13346/04 (IEC:60079-0/00)	NAME	DATE		
CCE : R1(1)136/BALIGA/12-XVIII, DT:24.12.2004	IS:2148/04 (IEC:60079-1/01)	REV-1			
BIS : CM/L-0364341	IS:12063/87 (IEC:60529/89)	REV-2			
		DRN.	S.S 18.03.09		
		CHKD.			
		APPD.			
		DRG. No.	REV		
		QEEPFL2201	0		



Baliga Lighting Equipments Private Limited,
KOVILAMBAKKAM, CHENNAI-600 117, INDIA.

IF IN DOUBT ASK

DO NOT SCALE



NOTES:

- GL - GLASS (BOROSILICATE CLEAR UNTOUGHENED TUBE GLASS)
- LAMP TO SUIT - 2 x 36W FLUORESCENT TUBE LIGHT
- LAMP HOLDER - SPRING LOADED BI-PIN
- TEMP. CLASS - T6
- RE - EXTERNAL REFLECTOR (ALUMINIUM-EPOXY COATED)
- WG - WIRE GUARD (M.S, EPOXY POWDER COATED - WHITE COLOUR)
- BR - TYPE 'B' STRAP SUSPENSION (M.S)
- NP - NAME & WARNING PLATE (SS)
- EARTHING - 2Nos. EXTERNAL & 1No. INTERNAL
- HARDWARES - SS304
- CHOKE - 2 x 36W ELECTRONIC CHOKE
- INTERNAL WIRING - PVC WIRES WITH LUGS

ALL DIMENSIONS ARE IN MM.

E	CABLE ENTRY:- 2Nos. 0.75 ET (1No. Br. Ni. PLATED PLUG)		CUSTOMER : -		TITLE : EXPLOSIONPROOF TWIN FLUORESCENT LIGHT FITTING			
			CONSULTANT : -		CAT No. : EPFL-240 NEW			
			PROJECT : -		CLASSIFICATION: Exd IIB IP65 ZONE 1&2 T6			
			P.O No.: -		WT:16Kgs (APPROX)	MATL: AL. LM6	ITEM No:	QTY:
			FINISH : EPOXY POWDER COATED (SHADE-632 OF IS:5)		TOLERANCE : ±5mm SCALE : N.T.S		FOR INFORMATION ONLY	
F	CMRI : V/1/1945 DT:15.09.82		IS:13346/04 (IEC:60079-0/00)		NAME	DATE		
	CCE : R1(1)136/BALIGA/12-XVII DT. 24.08.06		IS:2148/04 (IEC:60079-1/01)		REV-1			
	BIS : CM/L-0364341		IS:12063/87 (IEC:60529/89)		REV-2		SHEET 1 OF 1	
					DRN.	S.S	18.03.09	DRG. NO.
				CHKD.			QEEPFL2402	0
				APPD.				



Baliga Lighting Equipments Limited

KOVILAMBAKKAM, CHENNAI-600 117, INDIA.

केन्द्रीय खनन एवं ईंधन अनुसंधान संस्थान

(वैज्ञानिक तथा औद्योगिक अनुसंधान परिषद)

बरवा रोड, धनबाद - 826 001, झारखण्ड, भारत



ADDITIONAL FIRST COPY

Central Institute of Mining and Fuel Research

Formerly : Central Mining Research Institute
(Council of Scientific & Industrial Research)
BARWA ROAD, DHANBAD-826 001, JHARKHAND, INDIA

REGISTERED POST/COURIER SERVICE

No. CIMFR/TC/SR/ 381
I.D. No. 751/07

Dated: 27 August, 2008
CODE NO.FLP/204ZW/08

To,
BALIGA LIGHTING EQUIPMENTS PRIVATE LIMITED,
63A, C.P. RAMASWAMY ROAD,
ALWARPET,
CHENNAI-600 018

Sub: Supplementary Testing for **REVALIDATION** as per IS: 2148- 2004 (IEC 60079-1/2001) of your **Flameproof & Weatherproof Twin Fluorescent Tube Light Fitting** as designated by Cat. No.: **EPFL-240**, in cast aluminium alloy LM-6 construction body fitted with heat resistant and toughened clear boro-Silicate glass tubes suitable for 2x40 watt fluorescent lamps at supply voltage of 230Volts (max.) for use in Gas Groups: IIA & IIB and Zone 1 & 2 atmospheres only.
- Report on (REVALIDATION)

Your Ref. No. CMRI/6/112/IIB

Dated: 13/12/2007

Dear Sir,

Please find enclosed the **Supplementary Test Report** for **REVALIDATION** of the above sample as per IS: 2148-2004.

The above apparatus was earlier certified as per IS: 2148-1981 vide CMRI Certificate No. V/1/1/287, Dated: 18/06/1982 mentioned in the schedule of this report.

Charges of **Rs. 27,787/- (Rupees Twenty seven thousand Seven hundred Eighty seven)** only including applicable service charges involved towards the testing/issuing the schedule have been adjusted against the advance deposit made by you.

Kindly arrange to collect the sample within 90 days from the date of receipt of this letter failing which CIMFR would dispose off the sample by public auction without any further NOTICE to you.

Kindly acknowledge receipt.

Thanking you,

Yours faithfully,


(G. M. PRASAD)

HEAD OF THE DEPARTMENT
TESTING CELL

Encl.: As above

Supplementary Report for Revalidation in Triplicate

Copy to: 1. Head, Flame & Explosion Lab.

2. Bill Section.

1 of 8

फोन-निदेशक Director
Ph.: 0091-326-2202326/2203043

पी० ए० एक्स PAX
Ph.: 0091-326-2203010/2203070/2203090/2205045/2209041

फैक्स FAX
0091-326-2201442/2202429/2204339/2203156

e-mail : dcmrips@yahoo.co.in, dcmri@csir.res.in • Website : www.cmriindia.nic.in

कार्यालय के दिन : सोमवार से शुक्रवार तक Working days : Monday to Friday