

FTL 501

MULTI COLOUR LED CLUSTER BASED TRAFFIC LIGHT



Mechanical Data

Material	: Aluminium LM6
Weight	: 3.5 Kg for twin and 8.0 Kg for three IL
IP Protection	: IP 65 to IS:13947 / 93
Finish	: Anti Corrosive Epoxy-Powder Coated
Cable Entry	: 2 x 3/4 " ET
Gasket	: Neoprene
Hardware	: Stainless Steel

Electrical Data

Voltage	V : 12 V DC or 110 V/ 230 V AC - 50 Hz
Lamp Wattage W	: 7 - 10 W (Max.,) Each
Terminals	: 4 x 4 sq.mm.
Earthing	: External 2 Nos - M6 Internal 1 No - M5

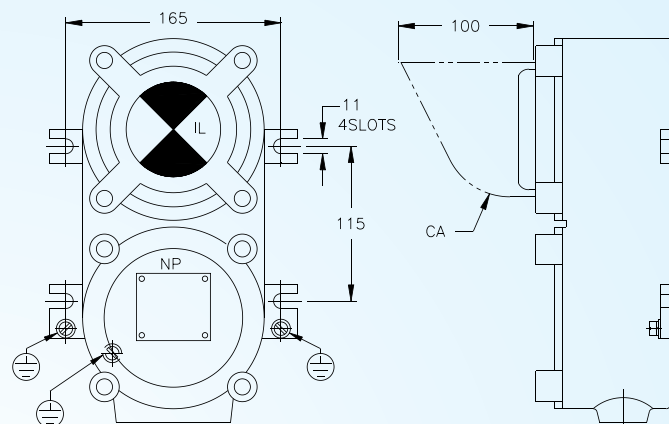
Salient Features

- 1 Single LED cluster with polarity feature reversing for alternating between Red, Amber and Green.
- 2 Black Canopy to avoid sunlight reflection.
- 3 Suitable for multi dropping and through connections.

Description

Explosion proof Traffic Light with integral terminal chamber. It has a LED cluster of Red, Green or Amber for operation with low energy and for long life span. Toughened flat glass cemented to retaining cover fixed to the body. The LED cluster is covered with glass reflector for clear and long range viewing with individual canopy. The terminal chamber incorporating terminals and cable entries for wiring through FLP cable glands.

GA Drawing

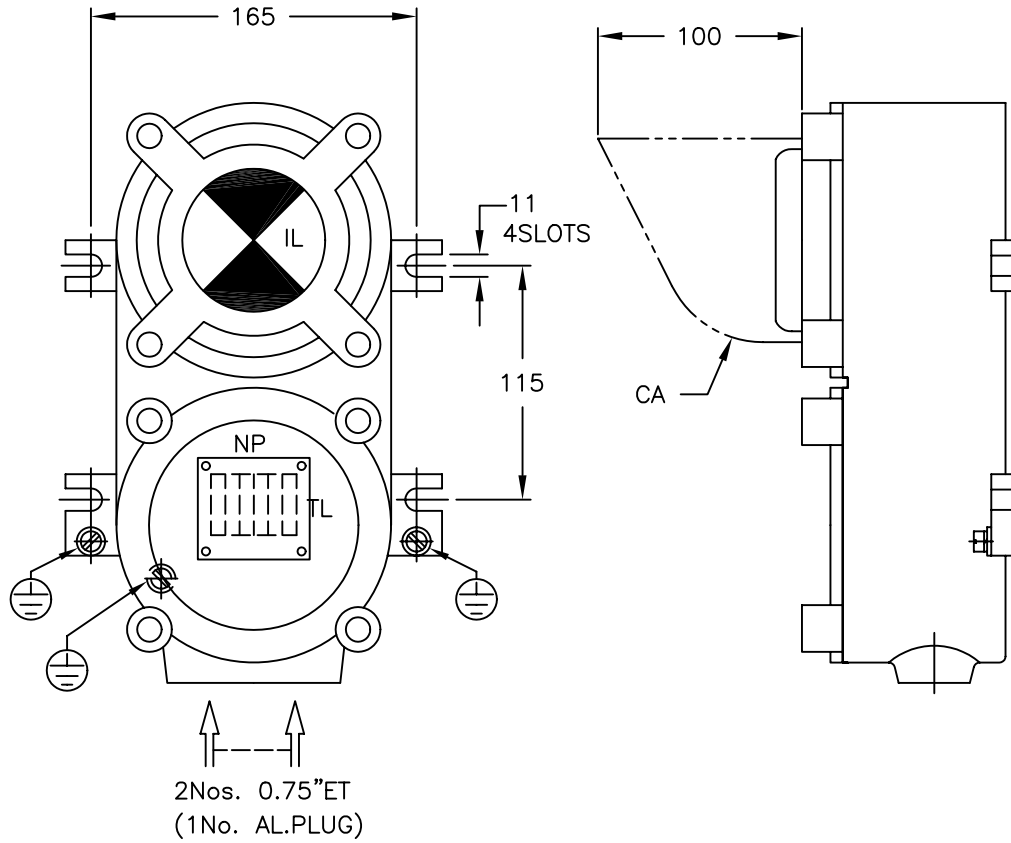


IL - LED TYPE INDICATION (GREEN) 15W, 230V AC
CA - CANOPY - ALUMINIUM SHEET (2MM THICK)
NP - NAME & WARNING PLATE (SS)



All Dimensions are in mm

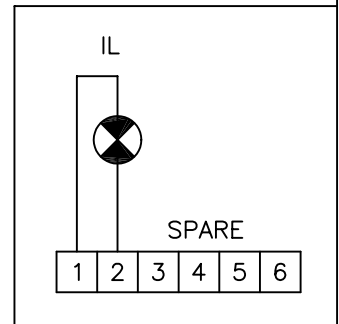
Type of protection	Flame Proof - Exd
Area Classification	Zone 1 & 2
Gas Groups	Group I, II A, II B
Apparatus Standard	IS - 2148 / 81 & IS- 2206
CMRI Certificate No.	CMRI / TC / P / H 349
Approvals	CCE



NOTES:

- IL - LED TYPE INDICATION (GREEN) 15W, 230V AC
- CA - CANOPY - ALUMINIUM SHEET (2MM THICK)
- TL - TERMINALS 6Nos. 2.5SQMM
- NP - NAME & WARNING PLATE (SS)
- HARDWARES - SS304
- EARTHING - 2Nos. EXTERNAL & 1No. INTERNAL

WIRING DIAGRAM



ALL DIMENSIONS ARE IN MM.

FOR INFORMATION ONLY

	CUSTOMER :	TITLE : FLP TRAFFIC LIGHT				
	CONSULTANT :	CAT No. : FTL-501				
	PROJECT :	CLASSIFICATION: Exd IIB IP-65 ZONE 1&2				
	P.O No. :	WT.:3.5Kgs (APPROX.)	MATL.: LM-6	ITEM No.:	QTY.:	
	FINISH : EPOXY POWDER COATED	TOLERANCE : ±5mm		SCALE N.T.S		
CMRS : V/1/1/1654 DT:10.03.86	IS : 13947/93	NAME	DATE			
CCE : R1(1)136/BALIGA/12-XV DT:09.01.2001	IS : 2148/81	REV-1	P.S	17.10.02		
DGFAS : 66/13/S/1654/2000-TECH DT:23.02.2001		REV-2			SHEET 1 OF 1	
Baliga Lighting Equipments Private Limited, KOVILAMBAKKAM, CHENNAI-600 117, INDIA.		DRN.	P.S	07.10.02	DRG. NO.	REV
		CHKD.			C027468002	1
		APPD.				