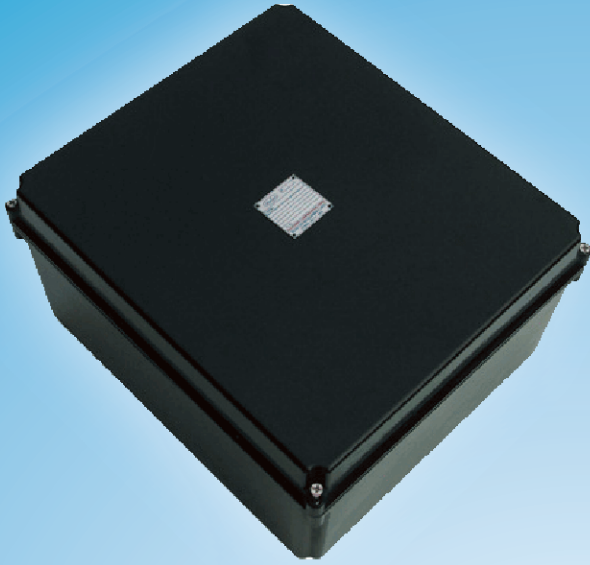


## IS 363609 - IS 604221

INCREASED SAFETY FRP JUNCTION BOX



### Mechanical Data

Material	: FRP
Weight	: Refer the dimension chart
IP Protection	: IP 65 as per IS-12063/1987 (IEC 60529/1989)
Finish	: Anti corrosive Epoxy powder coated
Cable Entry	: Refer Chart
Cover Fixing	: Bolted
Hinge	: Stainless Steel.
Gasket	: Neoprene
Hardware	: Stainless Steel (SS-304)

### Electrical Data

Terminals	: Refer Chart.
Earthing	: External : 2 Nos - M6 Internal : 1 No - M5
Terminal Blocks	: Glass Fibre reinforced DMC

### Cable entry chart

Entry size (Inches)			IS 363609		IS 404012		IS 422718		IS 422721		IS 604221	
BSC	NPT / BSP	Metric (mm)	A /B	C /D	C /D	A /B	C/D	A/B	C/D	A/B	C/D	A/B
0.50	0.25	M 16 X 1.5	14	11	20	20	18	34	34	30	52	34
0.75	0.50	M 20 X 1.5	10	8	16	16	15	27	24	20	36	24
1.0	0.75	M 25 X 1.5	6	6	7	7	8	14	21	18	32	21
1.25	1.0	M 32 X 1.5	5	5	6	6	6	12	12	10	18	12
1.50	1.25	M 40 X 1.5	4	4	5	5	3	7	10	8	16	10
2.0	1.50	M 48 X 1.5	-	-	-	-	2	4	5	4	7	5
2.5	2.0	M 63 X 1.5	-	-	-	-	2	4	4	3	6	4
3.0	2.5	M 75 X 1.5	-	-	-	-	2	3	3	2	5	3

### Description

Increased safety restricted breathing type of junction boxes, fitted with anti-vibration terminals to suit circuit requirements. Cast integral plates make it possible to provide wide combination of cable entries for different sizes. A continuously moulded gasket ensures reliable weather proof protection.

### GA Diagram

To View the GA Drawing click on the Catalogue No.

[IS 363609](#)

[IS 422718](#)

[IS 404012](#)

[IS 604221](#)

[IS 423721](#)

Type of protection	Increased Safety - Exe
Gas Groups	Zone 2
Apparatus Standard	IS - 8224
CMRI Certificate No.:	
IS 363609	CMRI / TC / A / H1139
IS 404012	CMRI / TC / A / H1139
IS 422718	CMRI / TC / A / H1139
IS 423721	CMRI / TC / A / H1139
IS 604221	CMRI / TC / A / H1139
Approvals	CCE

### Dimension Chart

Cat.No.	Internal Dimn.	Weight
IS 363609	360 X 360 X 90 mm	3600 g
IS 404012	400 X 400 X 120 mm	5550 g
IS 422718	420 X 270 X 180 mm	2500 g
IS 423721	420 X 370 X 210 mm	4300 g
IS 604221	600 X 420 X 210 mm	6950 g