

## ISJ 30360 Series

INCREASED SAFETY JUNCTION BOX.

### Description

Increased safety lighting junction boxes available in three different sizes with bolted cover. Maximum of four entries can be provided in each of circuit branching. A terminal block with anti-vibration terminals is provided for safe and reliable termination of the cables. High quality neoprene gaskets ensure reliable weather proof protection.

### Mechanical Data

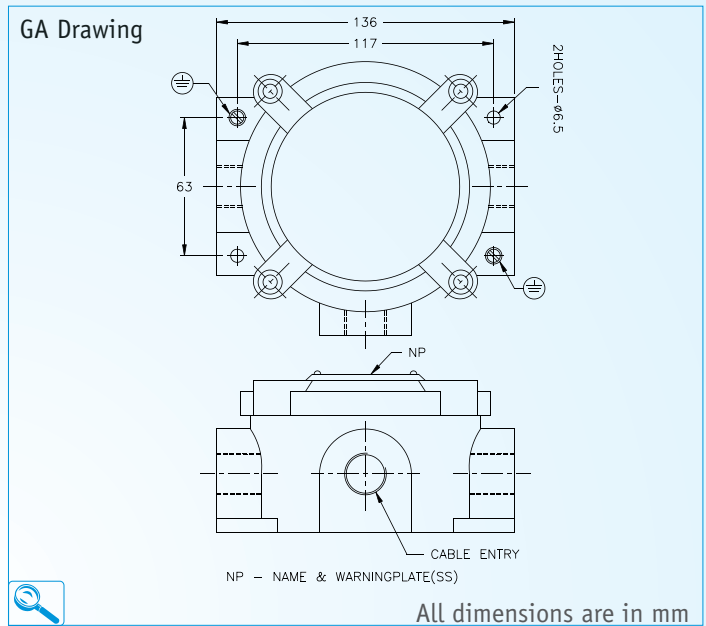
- Material : Aluminium LM6
- Weight : 0.95 Kg
- IP Protection : IP 55
- Finish : Anti corrosive Epoxy powder coated
- Cable Entry : Refer cable entry chart
- Cover Fixing : Bolted
- Gasket : Neoprene
- Hardware : Stainless Steel (SS-304)

### Electrical Data

- Terminals : 6 nos. 4 sq.mm
- Earthing : External : 2 Nos - M6  
Internal : 1 No - M5
- Terminal Blocks : Glass Fibre reinforced DMC

### Cable Entry Chart

Entry Size (Inches)			Max no of entries on each side
BSC	NPT / BSP	Metric (mm)	
0.50	0.25	M16 x 1.5	1
0.75	0.50	M20 x 1.5	1
1.00	0.75	M25 x 1.5	1
1.25	1.00	M32 x 1.5	1



- Type of protection : Increased Safety - Exe
- Area Classification : Zone 2
- Gas Groups : Group I, II A & II B
- Apparatus Standard : IS - 8224
- CMRI Certificate No. : V / 1 / 5 / 1586
- Approvals : CCE

### Dimension Chart

Cat.No.	Entry	Dimension	Weight
ISJ 30362	2 WAY	95 mm dia x 50 mm	0.95 Kg
ISJ 30363	3 WAY	95 mm dia x 50 mm	0.95 Kg
ISJ 30364	4 WAY	95 mm dia x 50 mm	0.95 Kg