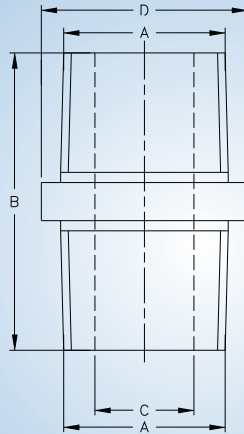


# UNION / NIPPLE / COUPLINGS



## BNP Series

Union /Nipple/Couplings  
AL/MS -BNP (MxM) Series



Cat. No	Dimension (mm)					Thread Size(Inches)			
	A	B	C	D	E	BSC / ET		NPT / BSP	
						F	G	F	G
BNP - 0	23	52				1/2			
BNP - 1	23	52				3/4		1/2	
BNP - 2	23	52				1		3/4	
BNP - 3	28	62				1 1/4		1	
BNP - 4	28	62				2		1 1/2	
BNP - 5	28	62				2 1/2		2	

CMRI Certificate No.: CMRI V / REV /1066

CMRI CERTIFIED

CERTIFICATES  
CMRI | CCE | BIS

[www.baliga.com](http://www.baliga.com)

